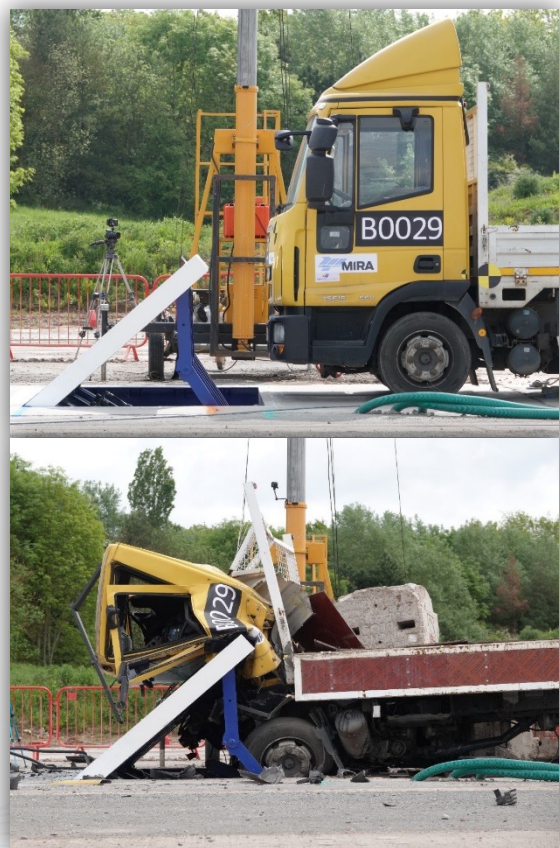


## SHALLOW MOUNT ROAD BLOCKER: MODEL BHIM 12(SF)

Swaraj Secutech's shallow foundation Road Blocker is one of the strongest products in today's HVM industry that has been impact tested at Horiba MIRA, UK to stop a fully laden 7.2-ton truck at 80 kmph with 0.0m penetration.

Along with a shallow foundation of only 300mm and a raised height of 1200mm, it is ideal for sites that require quick installation and has constraints for solutions that require a deep foundation.



### SALIENT FEATURES

Performance Rating achieved **IWA14-1:2013 Blocker V/7200[N2A]/80/90:0.0**

- 300mm Foundation Depth, 1200 mm height
- Operational after Impact
- Galvanized and Epoxy coated for anti-corrosion
- Manufactured from proprietary high-tensile steel
- Simple, effortless and quick installation
- EFO with customisable raising time
- Manual Hand pump/optional accumulator for Powerless operation
- 100% duty cycle with double-acting cylinders
- PLC-based Control Unit
- Successful integration with all 03<sup>rd</sup> party access control systems

#### INDIA

Survey no. 1427, Chhatral-Mehsana Highway, Rajpur Julasan road, Dharpura Chokdi, Jhulasan- 382705, Ahmedabad.

(T) +91 88826 64055,

Email - [info@swarajsecutech.com](mailto:info@swarajsecutech.com),

Website: [www.swarajsecutech.com](http://www.swarajsecutech.com)

#### UAE

Swaraj Secutech Equipment & Machinery Trading LLC, Warehouse-1, Plot No 1228. Sector 5, New Industrial Area, Umm Al Thaoob, UAQ, UAE (T) +971 508641797,

Email: [rashid@swarajsecutech.com](mailto:rashid@swarajsecutech.com)

Website: [www.swaraj.ae](http://www.swaraj.ae)

#### NORTH AMERICA

Swaraj Secutech Canada INC 2300 Yonge street, 1600, Toronto, ON, M4P 1E4

(T) +1 (647) 242-6738

Email: [mona@swarajsecutech.com](mailto:mona@swarajsecutech.com),

## TECHNICAL SPECIFICATIONS

MODEL NO.	BHIM 12 (SF)
DRIVE UNIT	ELECTRO- HYDRAULIC
RATED BLOCKING HEIGHT	1200MM
RATED BLOCKING WIDTH	3 - 6 METERS
RATED FOUNDATION DEPTH	300MM
MATERIAL	HIGH TENSILE CARBON STEEL
PRODUCT RATING	IWA14-1:2013 BLOCKER V/7200[N2A]/80/90:0.0
IMPACT LOAD	7.2 TON @ 80 KMPH WITH 0M PENETRATION (P1)
RAISING & LOWERING TIME	5 - 6 SEC (CUSTOMIZABLE)
EMERGENCY FAST OPERATION	<1.5 SEC (OPTIONAL & CUSTOMIZABLE)
POWERLESS OPERATION	3 CYCLES DEPLOY/RETRACT IF POWER TO HPU IS INTERRUPTED (OPTIONAL & CUSTOMIZABLE)
IN CASE OF POWER FAILURE	MANUAL PUMP OPERATION IN CASE OF POWER FAILURE AND AUTOMATIC LOWERING UPON POWER FAILURE.
CORROSION RESISTANCE	HOT DIP GALVANIZED AS PER IS-6745 & 4759
POWER SUPPLY	415 V (AC), 50 HZ / 220V AC , 60HZ
DUTY CYCLE	100%
OPERATING TEMPERATURE	-30 DEG. CELSIUS TO +65 DEG. CELSIUS
FINISH	RAL PAINTED
AXLE LOAD	50 TONS
SAFETY	PHOTO SENSORS FOR HUMAN SAFETY LOOP DETECTOR FOR VEHICLES SAFETY
INTEGRATION	CAN BE INTEGRATED TO ANY ACCESS CONTROL DEVICE INCLUDING BOOM BARRIERS/ BOLLARDS/ TYRE KILLERS
CONTROL UNIT	PLC BASED CONTROL UNIT ENABLING INTEGRATION WITH ALL 03 <sup>RD</sup> PARTY ACCESS CONTROLS

### INDIA

Survey no. 1427, Chhatral-Mehsana Highway, Rajpur Julasan road, Dharpura Chokdi, Jhulasan- 382705, Ahmedabad.

(T) +91 88826 64055,

Email - [info@swarajsecutech.com](mailto:info@swarajsecutech.com),

Website: [www.swarajsecutech.com](http://www.swarajsecutech.com)

### UAE

Swaraj Secutech Equipment & Machinery Trading LLC,  
Warehouse-1, Plot No 1228. Sector 5, New Industrial Area, Umm Al Thaoob, UAQ, UAE (T) +971 508641797,

Email: [rashid@swarajsecutech.com](mailto:rashid@swarajsecutech.com)

Website: [www.swaraj.ae](http://www.swaraj.ae)

### NORTH AMERICA

Swaraj Secutech Canada INC

2300 Yonge street, 1600, Toronto, ON, M4P 1E4

(T) +1 (647) 242-6738

Email: [mona@swarajsecutech.com](mailto:mona@swarajsecutech.com),